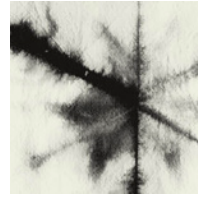


## PATTERN: Tye Dye

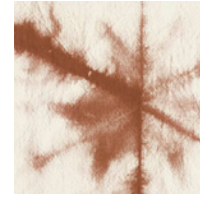


COLLECTION: Lignes

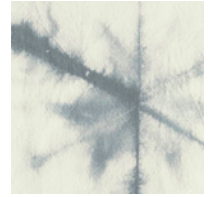
AVAILABLE COLORWAYS



Black - LN008-1



Clay - LN008-2



Pewter - LN008-3

We print to fit your specific wall size, therefore each order is individually priced. Each mural is broken down into panels that are approximately 48" wide. Installation is straightforward with marked, sequential panels that are easily double-cut on the wall. Please reference your project name and wall dimensions when requesting a quote.

RECOMMENDED SUBSTRATE: Look Linen

Material: Type II Vinyl

Backing: Poly-Cotton Woven

Total Weight: 21 oz. per linear yard

Width: 54"

Class A Fire Rating

ASTM E-84

Flame Spread: 10

Smoke Development: 5

UL-723

CAN S102M

EN 15102:2007

IMO Certified

**look.**  
WALLS & INTERIORS

[info@lookwalls.com](mailto:info@lookwalls.com)

214 560 4220

1352 Chemical Street  
Dallas, TX 75207